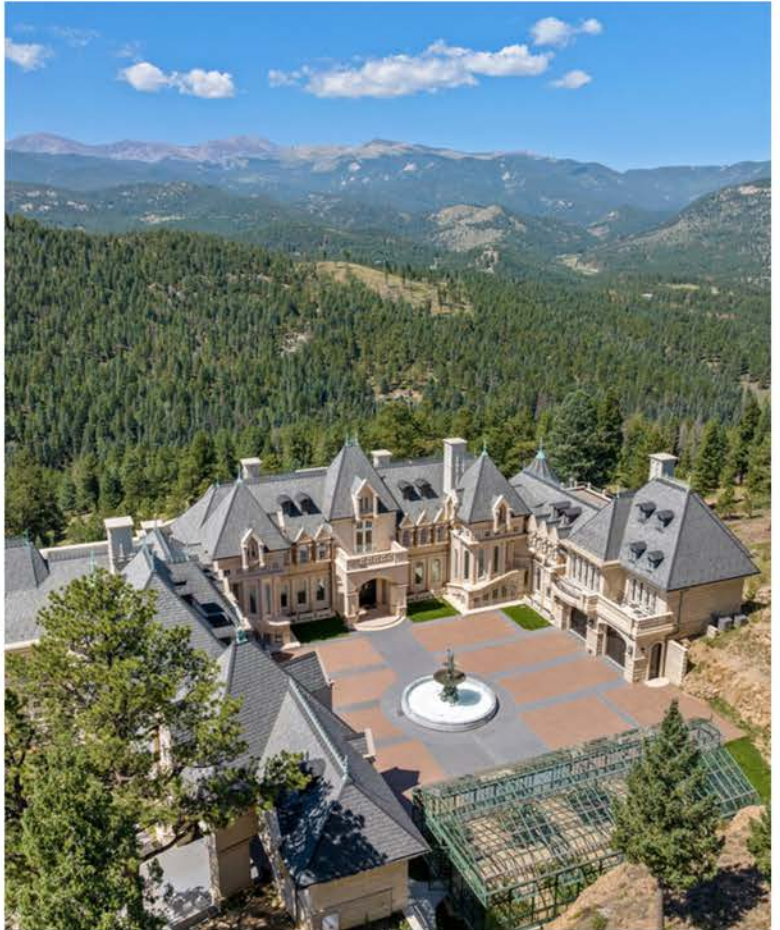


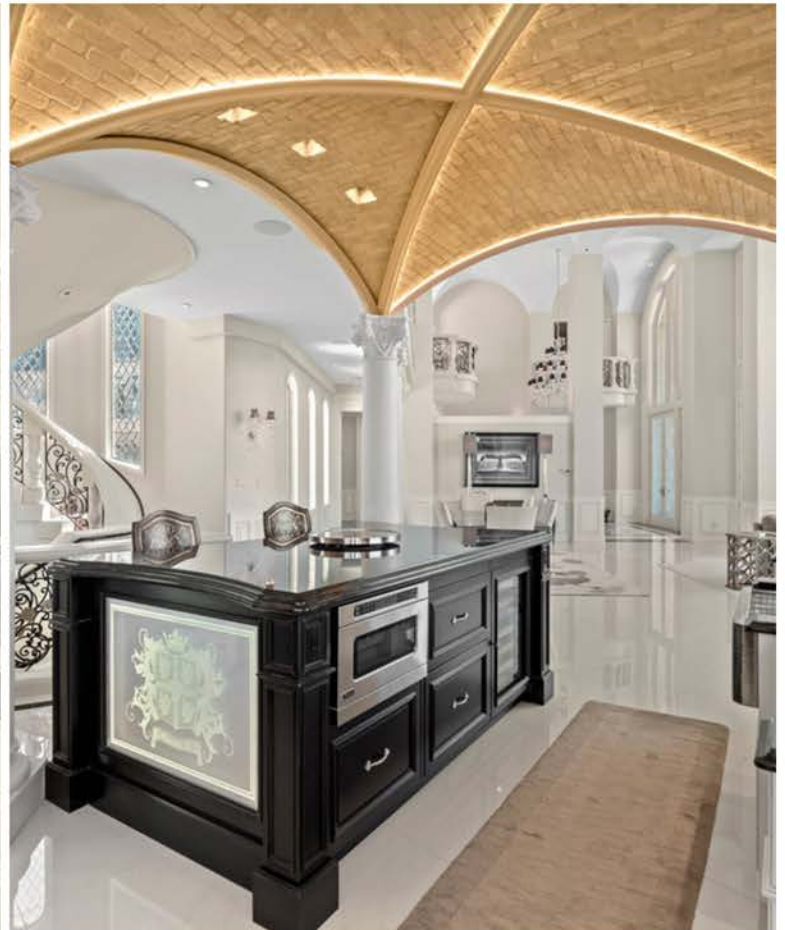
ENGEL & VÖLKERS®
MELISSA TEMPLE





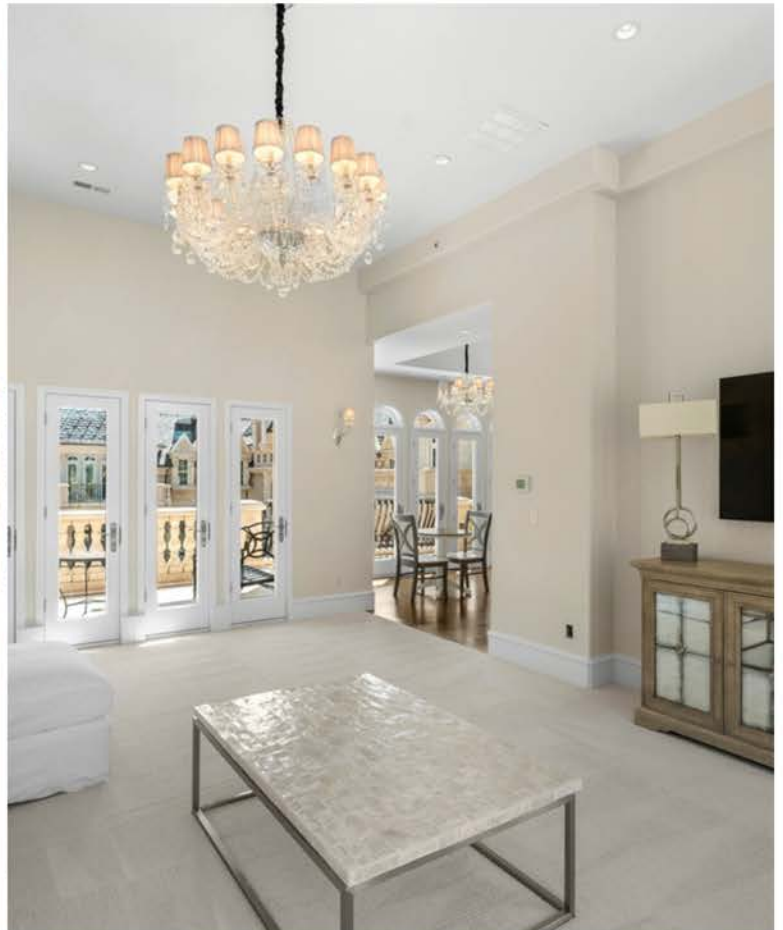
ENGEL & VÖLKERS®
MELISSA TEMPLE















ENGEL&VÖLKERS®
MELISSA TEMPLE

CHATEAU V

Nestled in the heart of Evergreen, Colorado, Chateau V stands as a testament to luxury and sophistication, drawing inspiration from the iconic grandeur of the Palace of Versailles. This exceptional estate is more than just a home; it's a lifestyle defined by elegance, privacy, and breathtaking beauty. Each detail within its walls has been meticulously crafted to offer an unparalleled living experience—from six opulent en suite bedrooms to a grand 1885 antique bar in the billiard room. Every room opens to astonishing 270° views of the Rocky Mountains, with a direct sightline to the majestic Mount Blue Sky. With a lavish outdoor oasis, including a heated pool, jacuzzi, and alfresco dining space, and thoughtful accommodations for guests and staff, Chateau V offers an extraordinary sanctuary that seamlessly blends French opulence with Colorado's natural splendor. This property is truly a one-of-a-kind masterpiece, inviting you to indulge in the height of luxury and make a statement in the world of fine living.

CASTLE INFORMATION

- 6 Primary Suites
- 10 Bathrooms
- 21,692 total square feet per county records
- Four floors with elevator access to all
- 6 custom designed limestone gas fireplaces produce substantial heat with an impressive flame. Gas line hook ups for outdoor heaters
- Heating & cooling – In-Floor radiant heat; zoned air conditioning
- Well water system and a 25,000 gallon cistern located underneath the south garage, (4) 300 gallon domestic water tanks. (2) 300 gallon holding tanks for fire system (fire hydrant on property)
- Marbled entrance hall with marbled flooring throughout the home
- Great room with immense glass wall full of mountain views
- Kitchen utilized self-supporting ceramic tile vault and arch system patented by Spanish architect Rafael Guastavino in 1892
- 2-story library with walnut flooring and a surrounding 2-story balcony
- Primary Master Suite with “Juliette” decks, living room, limestone fireplace and luxury bath with coffee bar, refrigerator, automated blinds and safe room – all on main level.
- Upstairs is 1,000 sq ft guest apartment (staff accommodations) with full kitchen and full windows with views.
- Four additional bedroom suites are located on upper & walk-out levels
- Family Room with 1885 antique bar and complete sound system
- Wine Room with room for 1,500 bottles
- Gym completely furnished with 6 exercise equipment
- Theatre with 110’ screen and custom sound system, 20 TV’s throughout
- 120 chandeliers throughout the home
- Multiple outdoor areas including 6,410 sqft of balconies, stone decks & Juliette decks.
- Roof - French style roof is a Da Vinci product of polycarbonate with a slate look and a lifetime warranty.
- Security System
- High Speed Internet through Viasat allowing for streaming, Zoom & multiple users
- Full Radon system
- Heated 4-car spaces in twin 2-car attached garages. Custom built-in floating storage units in both garages. South wing garage has oversized TV and complete set of tool drawers. North wing garage has back garage door for pull through capability
- 8,500 sq ft Motor Court
- Custom built Green House – 1, 250 square feet with 126 rose plants
- Lady & Eagle Fountain – antique from France
- (2) Marble carved lion statues from Italy
- Builder: David Williams Homes, Inc
- Architect: Jim Vander Vorste, BVZ Architects
- Heated outdoor pool 15’ x 35’ (15,000 gallons of water) with 9’x9’ jacuzzi
- Outdoor kitchen and bar
- Generator Installed – powers the entire home in case of power outage

PROPERTY INFORMATION

- 35.01 Acres – property straddles both Clear Creek & Jefferson Counties
- Eagles Nest Preserve – private gated community consisting of 4 homes each have 35 acres, 0.85 mile private road to residence from gatehouse
- Whispering pines, visiting elk, wild turkeys and other wildlife combine with nature's own landscaping of dark star-studded night skies and sunshine Colorado days to enhance life each day at all hours!

LOCATION INFORMATION

- Astounding foothills location
- 10 minutes to the town of Evergreen
- 45 minutes to Downtown Denver & Cherry Creek Shopping Center
- 60 minutes to Denver International Airport
- 80 minutes to Vail, Colorado
- Various Golf Course are 15 minutes to 60 minutes
- Ski Resorts within 90 minutes include Breckenridge, Echo Mountain, Copper Mountain, Keystone, Arapahoe Basin, Vail, Beaver Creek

**VISIT CHATEAUV.COM OR SCAN THE QR CODE
FOR MORE INFORMATION AND PHOTOS.**



MELISSA TEMPLE

PRIVATE OFFICE ADVISOR

(970) 948-8261 • MELISSA.TEMPLE@EVREALESTATE.COM

ENGEL & VÖLKERS®
MELISSA TEMPLE